

ROUTE DESCRIPTION FINCA VUYATELA

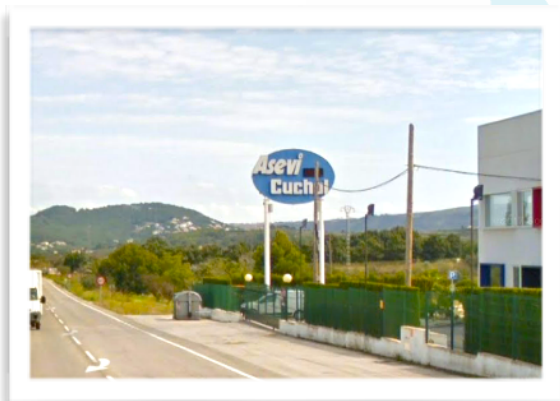
Carel Reisch (+31 6 5050 4809) & Patries van Dorst (+31 6 5029 2150)
Finca Vuyatela, Cami de Benimell s/n, 03730 Jávea (38 ° 45'54.0 "N 0 ° 07'36.6" E)

Read this description in advance.

Urgent advice NOT to drive the route via coordinates or via GPS / smartphone. (Do you prefer GPS? Then enter: Cami del Benimell, Jávea, upon arrival continue from photo 3. **Avoid** the Camino Tarraula!)

- On the **AP7** motorway, take **exit 62**. (Also from Alicante this slightly further exit is better)
- After the toll booth, head towards Jávea / Xàbia, this is the **N332**.
- After approximately 5.5 km on the N332, take the Jávea / Xàbia exit. This is the **CV 734**.
- Continue onto Jávea / Xàbia. When you have passed the second roundabout (after approximately about 1.8 km), on your right you will see a soap factory **Asevi Cuchol** this can be recognized by its blue sign with temperature and time (see photo 1)

photo 1



after 350
meter
turn right at
white fence.

photo 2



- After approx. 350 m from the soap factory with white fence (see photo 2), turn right onto the Cami Cabanes.
- Here you can wait, and call us, or continue the Cami Cabanes and drive for 1.46 KM. After 1.46 km you will see the Cami del Benimell on the right (photo 3) (difficult to see, the sign is in the opposite direction ...). Turn right here and continue on this narrow road.
- After about 800 meters cross the riverbed (photo 4), then drive up to the left keeping the concrete blocks on your lefthand side (photo 5) at the end of the concrete blocks turn right. After 450 meters you will see the entrance of Finca Vuyatela on your left.

foto 3

foto 4

foto 5

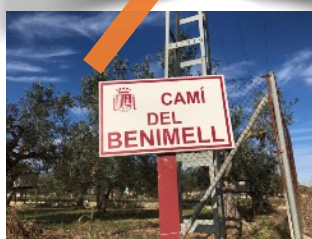


foto 6